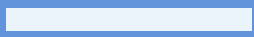


PROTECTOR

P10²⁰²²



WWW.IWTM-UK.COM

T: +44 208 255 2903

E: INFO@IWTM-UK.COM

TABLE OF CONTENTS

03 PROTECTOR P10 DESCRIPTION

05 PROTECTOR P10 FUNCTIONS

06 FILTERING ELEMENTS

07 DETAILED INTERNAL AND
EXTERNAL VIEW

08 DIMENSIONS

10 TECHNICAL DATA

UK PATENT PENDING:

PATENT APPLICATION NUMBER 2300221.5



PROTECTOR P10 DESCRIPTION

ALL-IN-ONE FILTRATION AND WATER TREATMENT UNIT.

WHAT IS IT?

Protector P10 is a model from our IWTM Protector™ range, a unique side stream filtration device that engineers the system water to a non-corrosive state. It provides corrosion protection in both new and existing heating and cooling systems, by removing sludge, particles, oxygen, and other corrosive products. Therefore, the system is maintained in the best possible way, by constantly filtering and engineering the water using electrochemistry and anode technology. The result is that its cleaning and engineering the water at the same time.

NEXT GENERATION OF ELECTROCHEMISTRY

The units provide faster clean-up of old systems and quicker compliance with pre commissioning targets on new systems due to the higher flow rates through the reaction tank (cathode) and the inbuilt ss micron filter that enables finer filtration. The unscreened larger anodes last longer and release the magnesium hydroxide quicker for faster pH control. Compliance with VDI 2035 is still obtained as the anodes sit inside the basket to capture the magnesium residue when the anodes expire.

Each filter contains neodymium magnets to retain ferrous particles, magnesium anodes to consume oxygen and increase the pH value, and a stainless-steel micron filter (40µm) or bag filter (various micron sizes, down to 1 µm) to filtrate the water and remove any suspended solids. The two filter types are entirely interchangeable.

Protector P10 is completely insulated and cladded to prevent heat loss and condensation: it is installed as a side stream device only.

HOW DOES IT WORK?

The water enters from the inlet connection, then passes around and down, past magnets and anodes. The dry internal magnets will prevent the filter basket from clogging up as the magnet sleeve will retain the magnetic particles (magnetite) in place until the magnet is removed for cleaning and blow down. During this process, oxygen will be consumed by dissolving the anodes, and excess air will rise up and out of the vent valve.

The water will now flow through the ss micron filter / filter bag so that particles will physically be stopped by either of the filters. The result will be clear water with controlled alkaline pH, without oxygen or particles and sludge.

MAINTENANCE

When the progressive build-up of suspended solids retained by the ss micron filter causes an excessive increase of pressure differential between the inlet and outlet connections, the filter must be cleaned.

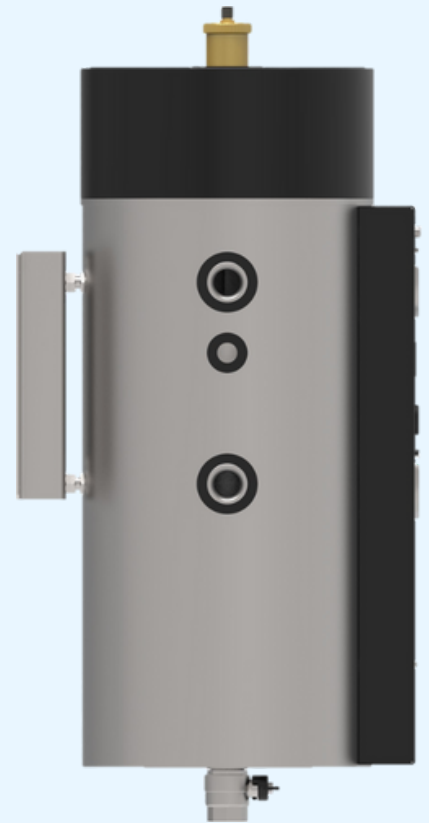
To perform the cleaning operations, there are two options either a normal backflush of the filter, or by complete removal and washing of the filter. The ss micron filter can be used to remove chemicals and, inhibitors but works well with organic glycol.

FIXING SYSTEMS

EASILY INSTALL THE PROTECTOR MINI ON THE WALL

Protector P10 has a compact wall fixing system; therefore the unit can be fixed on to the wall to save space in situations where space is important and limited. The system is included as a standard feature in the Protector P10.

The wall fixing bracket and nuts are completely in stainless steel, very robust and resistant.



1) Wall Mounting bracket:

Protector P10 can be installed on the wall as of this stainless-steel wall bracket.

2) Cylindrical head screws & nuts: used to fix the Protector P10

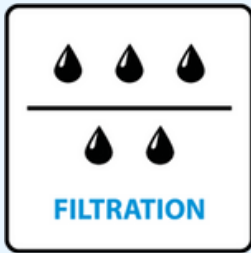


OPTIONAL FLOOR MOUNT SYSTEM

When wall space is not available, the Protector P10 can be fixed with the floor mount bracket as an alternative.

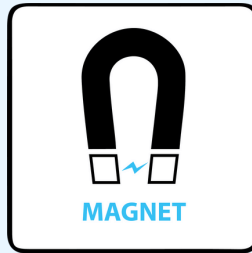


PROTECTOR P10 FUNCTIONS



FILTRATION

PARTICLE
FILTRATION



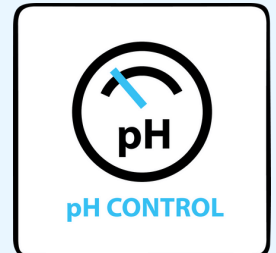
MAGNET

MAGNETIC
PROTECTION



Oxygen
15.999
OXYGEN
CONTROL

REDUCES
DISSOLVED OXYGEN



pH
pH CONTROL

CORROSION
PREVENTION

Prevents Corrosion

Protector's water treatment features prevent corrosion in the system. This is achieved thanks to magnesium anodes that lower oxygen, regulate pH, and reduce electrical conductivity.

All In One

Protector is an "all in one solution". It combines several different technologies in one single extremely functional and reliable device.

Traps Ferrous Particles

Protector is equipped with Neodymium Magnets that trap ferrous particles, drastically increasing the time before manual intervention is needed.

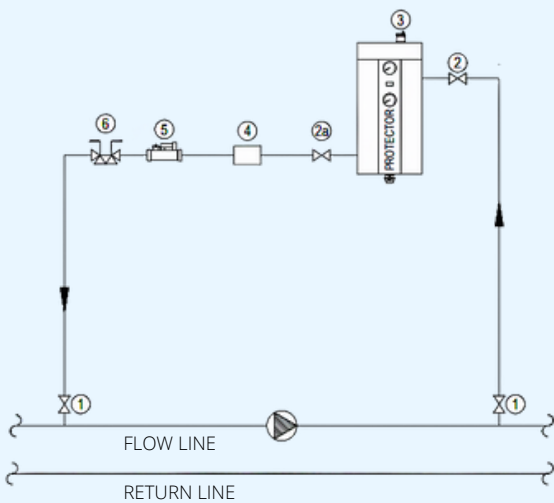
Removes Contamination

Protector cleans and restores recirculating systems by removing suspended particles.

+ PROVIDES	- REPLACES
Sludge and particle removal	Bag filters
Magnetite Removal	Magnet filters
pH adjustment	Chemicals
Oxygen consumption	Air separators
Anodic water treatment	Dosing pots + automatic dosing systems

PROTECTOR P10 FUNCTIONS

FILTERING ELEMENTS

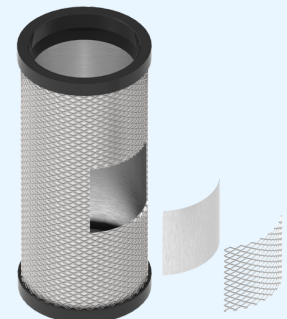


Protector P10 keeps your system clean by adapting to your needs. Two different filtering elements, completely interchangeable, remove suspended particles from the recirculating system.

The use of gauge filters by progressive stepped filtration helps to avoid filters blocking too early.

PARTICLE FILTRATION

Protector P10 comes as standard with a robust stainless steel filter which is 40 micron nominal (55 absolute). Stainless steel AISI 316.



2-Layer S.S Filter

The ss micron filter has a large surface which gives a long operating time before cleaning and thus less flushing and refilling.



FINE FILTRATION

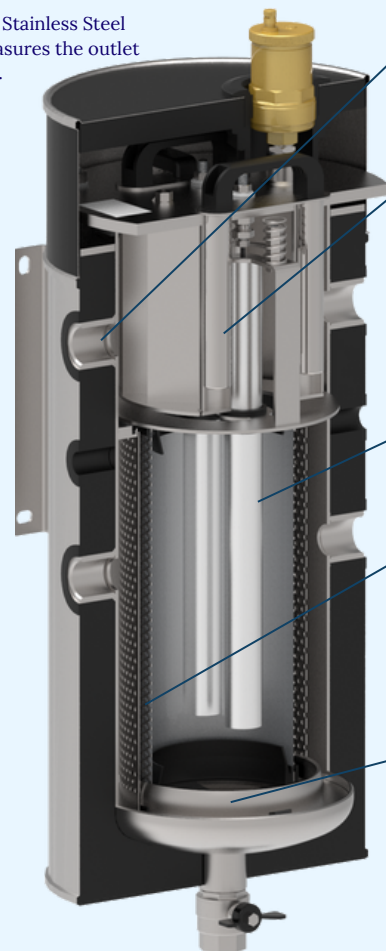
The ss micron filter can be replaced with filter bags with a filter degree down to 1 µm.

DETAILED EXTERNAL & INTERNAL VIEW



- 1 Vent pipe + automatic vent valve:** An automatic vent valve is installed at the top of the vent pipe.
- 2 Top insulation cap:** Easily removed when the Protector unit needs maintenance.
- 3 Inlet Pressure Gauge:** Stainless Steel pressure gauge that measures the inlet pressure. Scale 0-10 bar.
- 4 Vessel insulation and cladding:** External cladding in stainless steel and internal Armaflex insulation against cold/hot to prevent condensation.
- 5 Amp meter:** this indicator device measures the intensity of the current produced by the anode relative to the cathode, which is directly related to the corrosiveness of the system water.
- 6 Amp meter button:** tests operation of the swing meter.
- 7 Outlet Pressure Gauge:** Stainless Steel pressure gauge that measures the outlet pressure. Scale 0-10 bar.

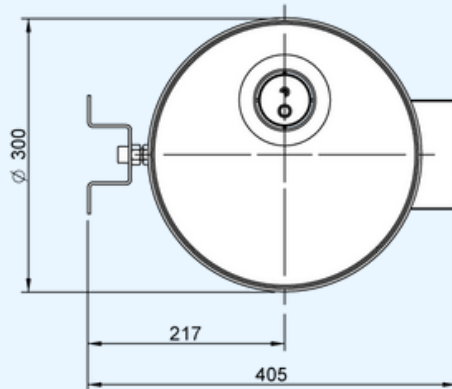
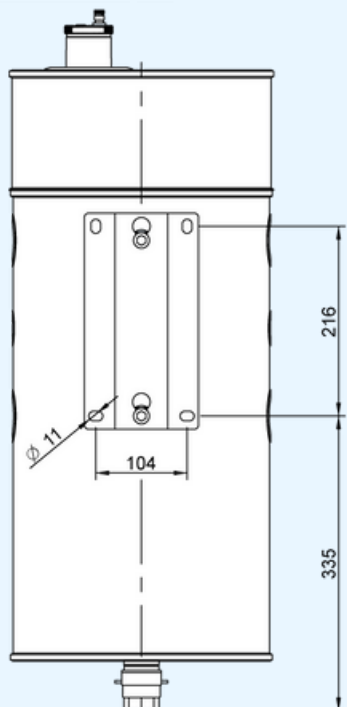
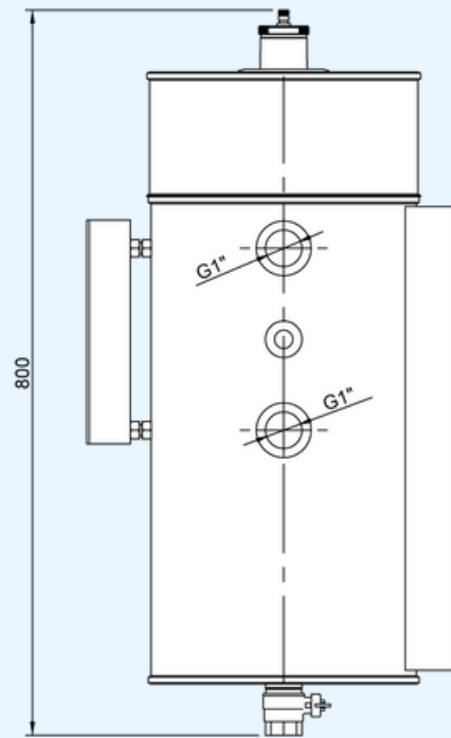
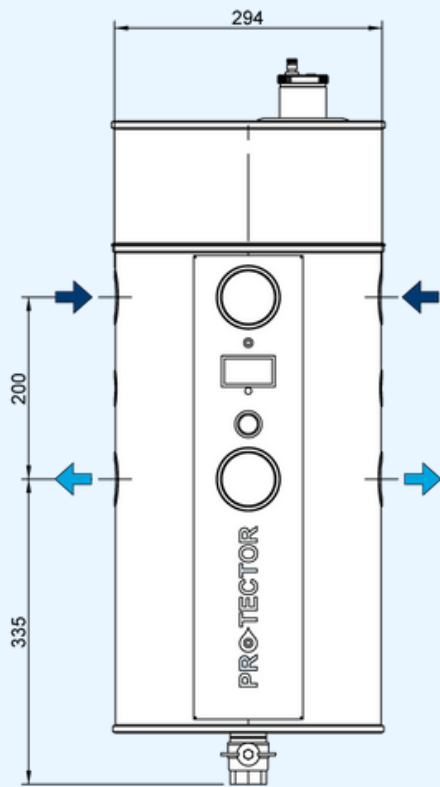
8 Drain: The filter is emptied with a manual valve installed on the drainpipe. Can be easily connected to any existing drain manifold / pipe or automatic drain.



- 1 Inlet diverter:** Water entering the Protector is immediately directed towards the inner walls, accelerating the flow and creating a "vortex" that improves separation efficiency.
- 2 Neodymium Magnets:** These dry magnets are installed in front of the sacrificial anodes to protect them from ferrous particles, the neodymium magnets (total length 600mm) are coated in stainless steel to increase their durability and to make maintenance easier. In fact, they do not require manual cleaning because, once extracted from the filter thanks to the handle located on the lid, the dirt precipitates into the filtering element.
- 3 Sacrificial Anodes:** Magnesium Anodes that provide Cathodic protection and lower the fluids conductivity. The anodes also scavenge oxygen and regulate the pH.
- 4 Interchangeable filter elements / bags:** Stainless steel filters comes as standard at 40-micron nominal. SS micron filters can be replaced with bag filters down to 1 µm. This guarantees a supremely clean circulation water that provides optimal values for the plant and its components.
- 5 Large collection area:** The base design ensures circulation is retained for longer periods, lengthening the time before a manual clean of the filter.

DIMENSIONS

PROTECTOR P10 & WALL BRACKET



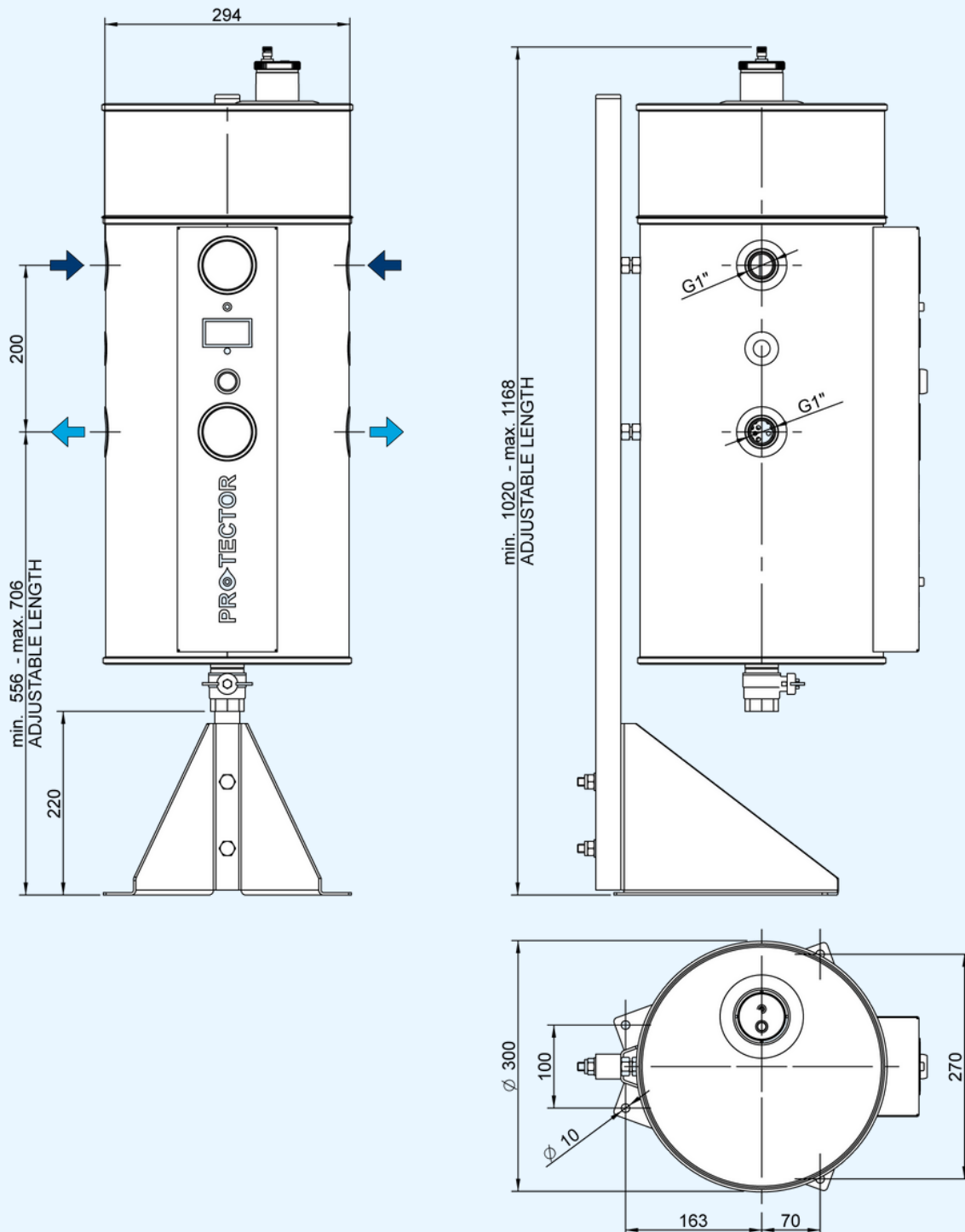
EMPTY WEIGHT: 33KG

FULL WEIGHT: 52KG

SHIPPING WEIGHT: 42KG

DIMENSIONS

PROTECTOR P10 & FLOOR MOUNT



TECHNICAL DATA

TECHNICAL SPECIFICATIONS

Parameter	Value
System Volume	Max: 10m ³ - Heating 7m ³ - Cooling
Water Flow	10 l/min
Design Pressure (bar)	PN 10
Max. Temperature (°C)	95
Tank Volume	20L
Design code	PED 2014/68/EU
Connections	1" FBSP

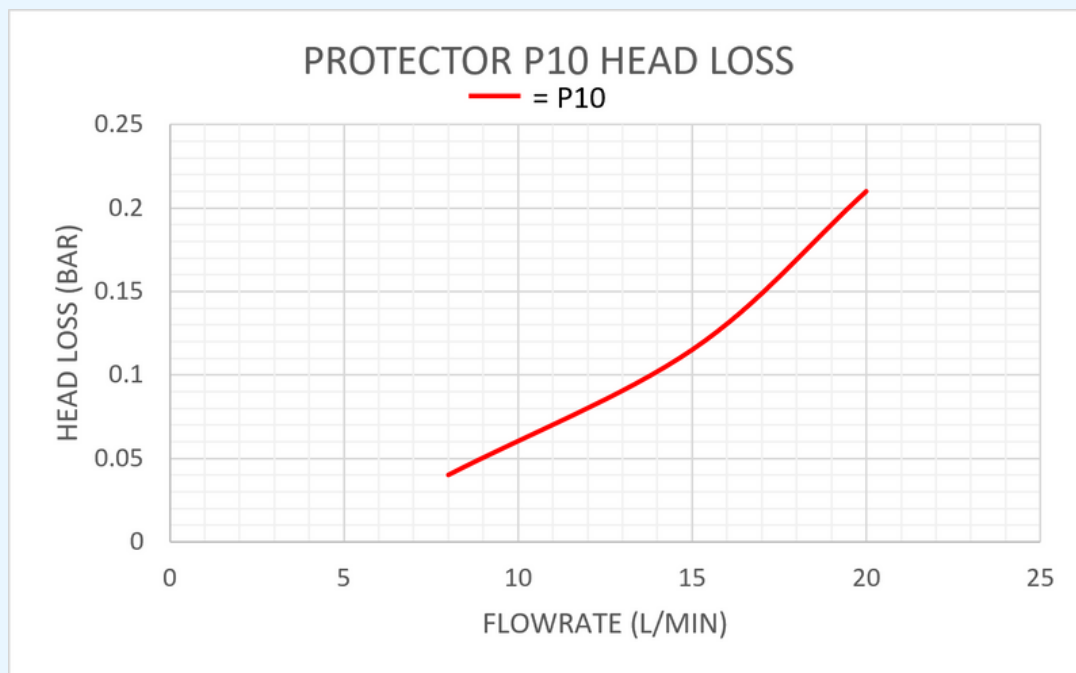
*Flow rate referred to clean water at 110µm filtration degree.

MATERIALS

Component	Component Material
Filter Housing	Stainless Steel AISI 304
Filter Screen	Stainless Steel AISI 316L
Gaskets EPDM *	EPDM *
Insulation / cladding	Armaflex / Stainless Steel
Pressure Gauges	Stainless Steel AISI 304
Anodes	Magnesium
Magnets	Neodymium
Surface Finishing	Shot Peening and Passivation

*Certified for the following European Drinking Water regulations: UBA, DVGW standard W-270, WRAS and ACS.

HEAD LOSS



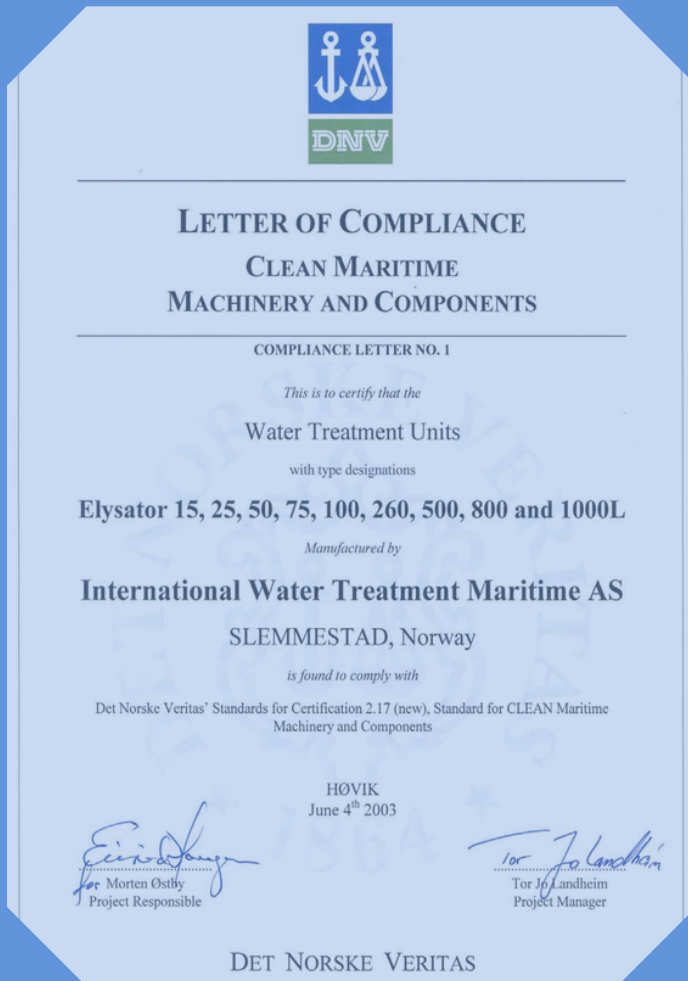
Head loss is calculated with 110µm stainless steel filter and clean water.

Note: Talk to us for higher pressure or temperature projects.

Environmental Culture Change

be a part of it

clean | protect | prevent



Founded in 1992, IWTM have been working with chemical free water treatment using electrochemistry for over 30 years and have offices in Norway, UK, Finland, Sweden, Canada, USA and a worldwide presence in the Marine sector.

We have developed models specifically suited to the higher demands of the marine industry operating at higher pressures and higher temperatures.

The marine products are provided worldwide on the world's largest cruise ships working with the leading operators in this sector.

Having secured DNV approval in 2003, we are still the only chemical free water treatment manufacturer to have this certification and approval. DNV is a globally leading quality assurance and risk management company operating in more than 100 countries.

The IWTM Protector™ is our most recently developed product. The Protector range is now available to our land-based customers.

Version 3 : June 2023

SUTTON BUSINESS CENTRE
RESTMOR WAY
WALLINGTON SM6 7AH

WWW.IWTM-UK.COM
T: +44 208 255 2903
E: INFO@IWTM-UK.COM